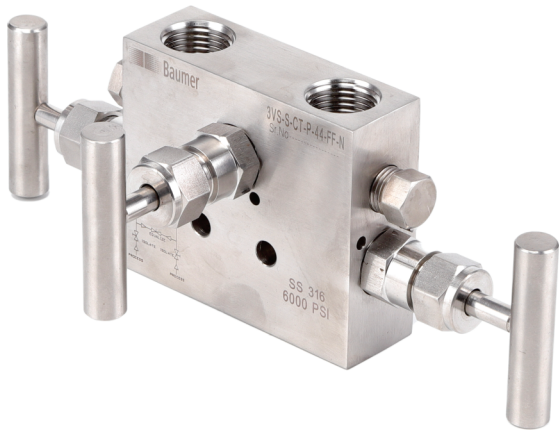


3VS

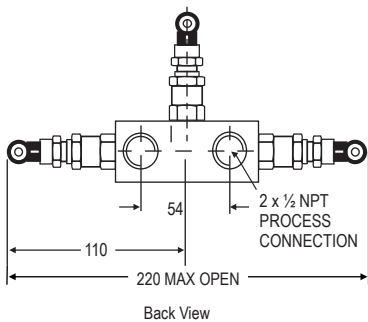
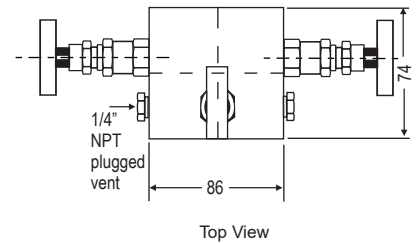
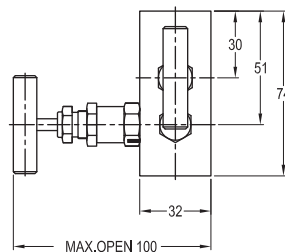
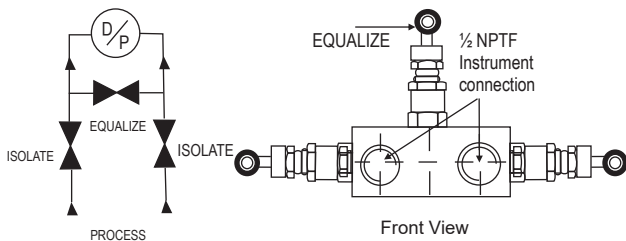
Remote mount (pipe to pipe)



With two threaded vertical port inlets and outlets, both test connections are positioned on the left and right hand side. The two isolating bonnets are positioned on the left and right hand side and the equalizing bonnet is positioned on the front and two drain plug provided on both side at instrument side.

Standard Connection

Product	Process side	Instrument side	Vent/Test
3VS	1/2" NPT female	1/2" NPT female	1/4" NPT female



- Notes :
- Drawings are not to scale.
 - All Dimensions are in mm.

Specifications

Body	: SS 316
Stem	: SS 316
Valve assembly	: SS 316
'T' bar handle	: SS 304
Maximum working pressure	: 6000 psi
Maximum working temperature	: 240°C
Packing	: PTFE
Type of stem	: Type CT; Stem with conical metal tip
Drain port	: 1/4" NPT [F]; provided with SS 316 plug
Bracket mounting holes	: 2 Nos.

How To Order

Body Material	Stem Type	Stem Packing	Size = Inlet x Outlet	Connections	Threads
C = Carbon Steel	CT (Std)	P = PTFE (Std)	24 = 1/4" x 1/4"	FF = Female x Female (Std)	N = NPT (ANSI B 1.20.1)
S = SS 316 (Std)	DS	G = Grafoil	44 = 1/2" x 1/2" (Std)	SW = Socket Weld	P = BSPP (BS 2779, ISO 228/1)
S4 = SS 304					B = BSPT (BS 21, ISO 7/1)
SL = SS 316L					
M4 = Monel 400					
M5 = Monel 500					
H = Hastelloy C					
S6 = SS 316/SS 316L (Dual)					
SD = SDSS (Super Duplex)					
I5 = Inconel 625					

Options

TF	:	Compliance to NACE standard
SG	:	For Oxygen service, valves are supplied cleaned, degreased and suitably packed.
GH	:	Material test certificate*
GO	:	Hydro test certificate
MB	:	Mounting Bracket

* Material test certificate will be provided for wetted parts only with chemical composition testing. for others, please consult factory.

Example

To place an order simply refer to the codes in the table.

Valve Type : Body Material + Stem Type + Stem Packing + Size + Connections + Threads + Options

3VS + C + CT + P + 44 + FF + N = 3VS . C . CT . P . 44 . FF . N . Options

NOTE:

- The weld prepared types are available with female plain end - suitable for socket weld.
- Anti-tamper bonnet - special design on request with locking arrangement if desired.